

# BBBike @ CPH

## Copenhagen by Bike A Route Planner for Cyclists in Perl/TK

YAPC::EU::2008, Copenhagen, 14-Aug-2008  
Wolfram Schneider, Andreas Hetey, Berlin.pm

# BBBike

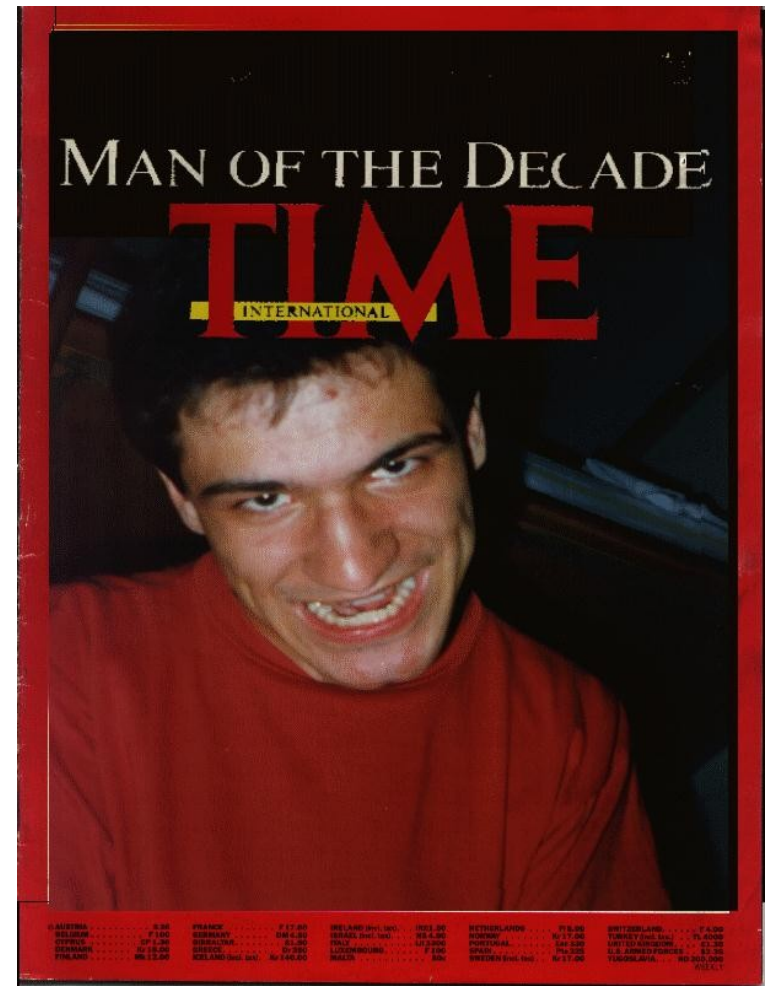
- A route planner for cyclists in Berlin & Brandenburg ([www.bbbike.de](http://www.bbbike.de))



# BBBike

- written in Perl/Tk
- data collected manually by author Slaven Rezić and contributors
- presented 2000 at 2. German Perl Workshop

(Picture found at Google Images)



# Example Route @ Berlin

File Kartenebenen Route Sucheinstellungen Routenliste Route löschen Plugins Einstellungen Hilfe

Ort/Bahnhof: km % 15 km/h 20 km/h 30 W 53 W Wind Tem  
Straße/Strecke: Poststadion 6.3 32 0:27 h 0:21 h 0:27 h 0:20 h Keine Daten

1:18475

franklin

- (Frankfurter Allee - Liebi
- Frankfurter Allee [Wohng
- (Frankfurter Allee, Neber
- Frankfurter Tor
- Franklinstr.
- Franz-Cornelsen-Weg
- Franz-Grothe-Weg
- Franz-Jacob-Str.
- Franz-Klühs-Str.
- Franz-Körner-Str.

Markieren als ... Start Ziel

Komplette Liste

Zeigen Schließen

Map labels: Westhafen, Beusselstr., U-Bahnhof: U-Bahnhof Kenstr., U-Bahnhof Turmstr., U-Bahnhof Hauptbahnhof, U-Bahnhof Hansaplatz, U-Bahnhof Tiergarten, U-Bahnhof Ernst-Reuter-Platz, U-Bahnhof Potsdamer Platz, U-Bahnhof Französische Str., U-Bahnhof Stadtmitte (U6), U-Bahnhof Stadtmitte (U8), U-Bahnhof Mohrenstr., U-Bahnhof Unter den Linden, U-Bahnhof Oranienburger Tor, U-Bahnhof Friedrichstr., U-Bahnhof Zionskirchstr., U-Bahnhof Schwartzkopffstr., U-Bahnhof Nordbahnhof, U-Bahnhof Oranienburger Tor.

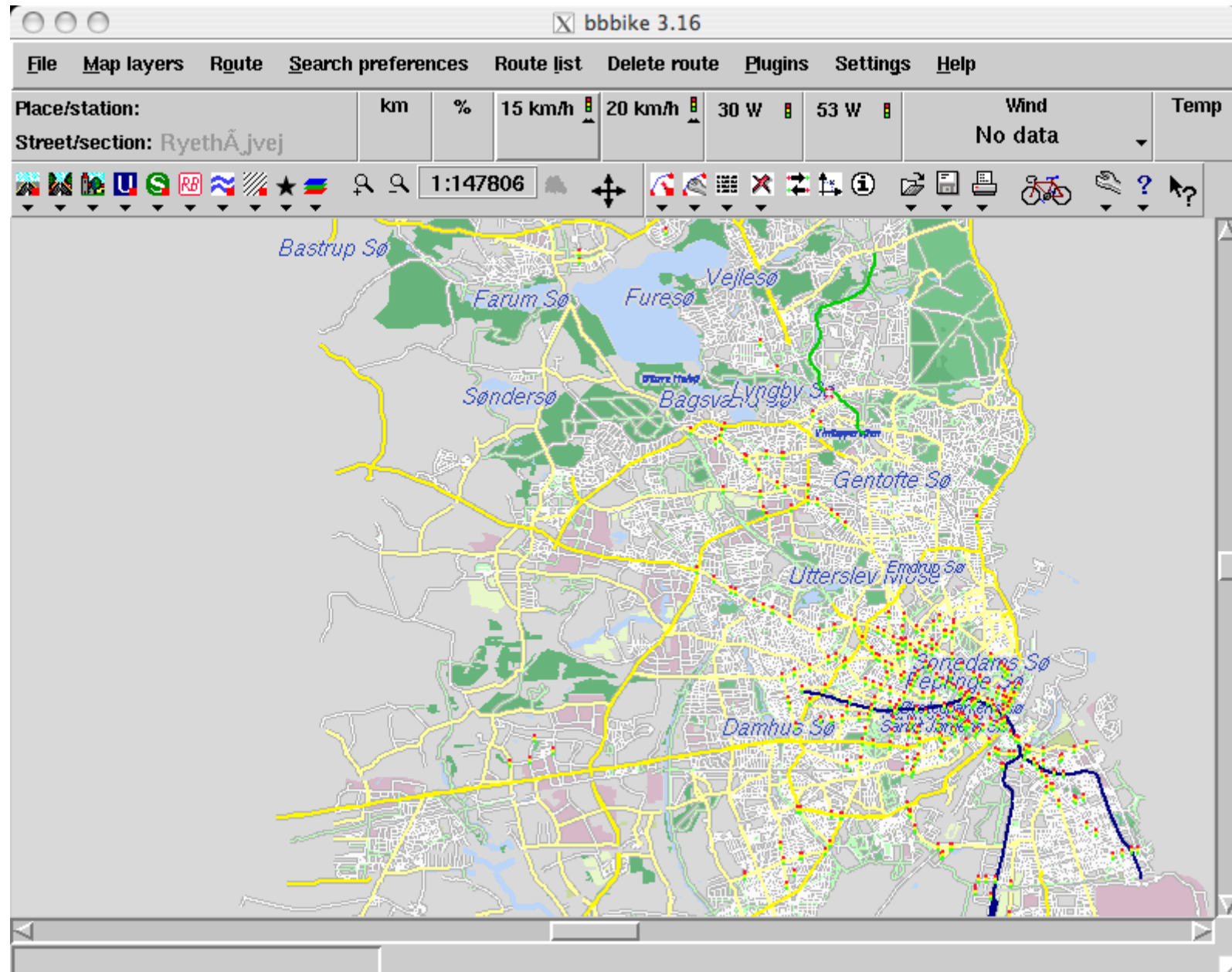
# Some Features

- list of all streets, metro stations, ...
- select street quality
- other preferences (no cars, no hills, green way, avoid carrying, obey oneway streets strictly, traffic light optimization, ...)
- realtime data (traffic, wind, temperature)

# Porting to Copenhagen

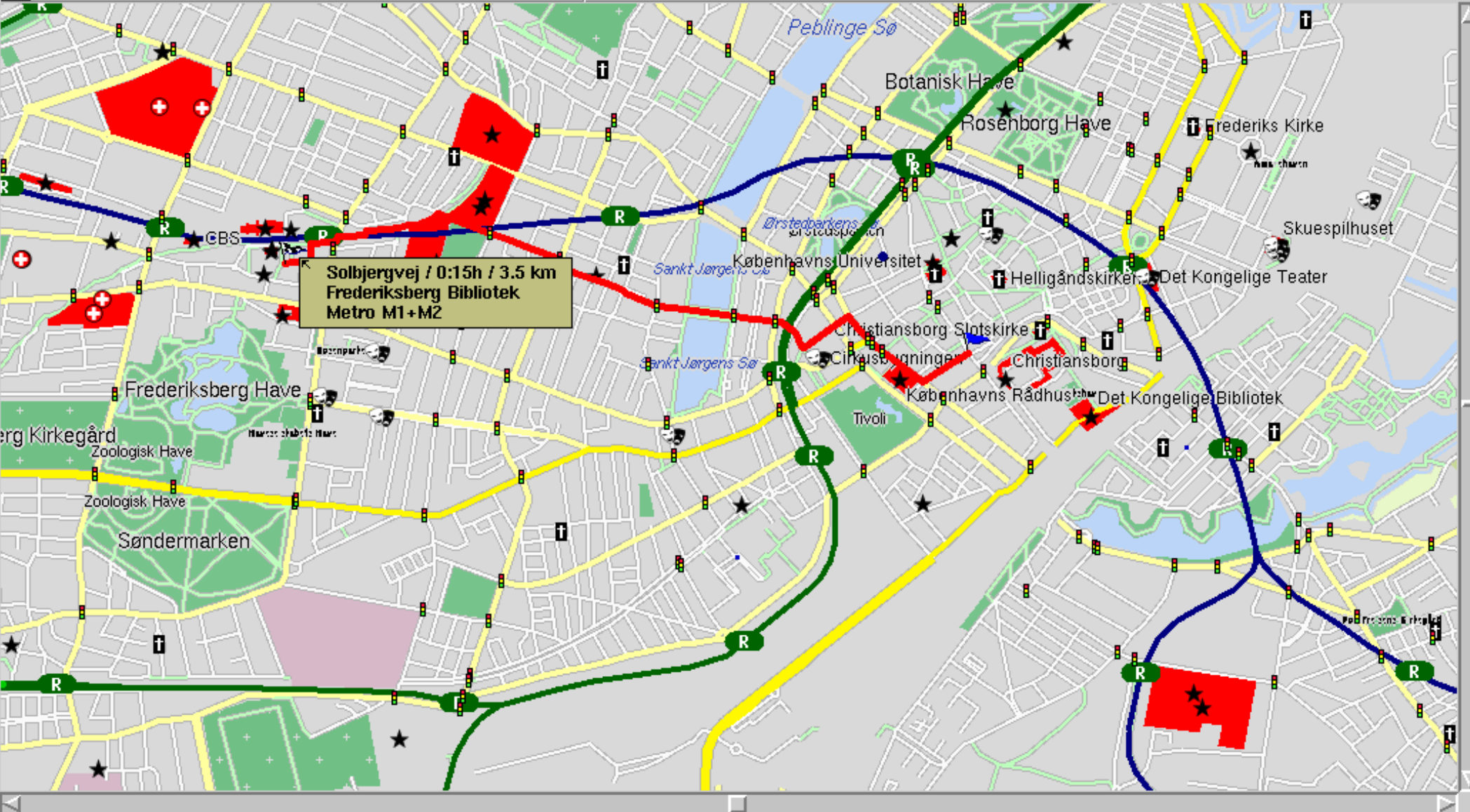
- modifying bbbike for YAPC::EU::2008
- data taken from [openstreetmap.org](http://openstreetmap.org)

# Copenhagen Map



Place/station:	km	%	15 km/h	20 km/h	30 W	53 W	Wind	Temp
Street/section: Solbjergvej	3.5	15	0:15 h	0:12 h	0:15 h	0:12 h	No data	

Map navigation toolbar including icons for zoom, pan, and various map layers. Scale: 1:18475.





# Getting the Map

- [www.openstreetmap.org](http://www.openstreetmap.org)
- selecting area, export data as XML  
=> save as copenhagen.osm
- converting xml to bbbike-format (script in current cvs)

```
./miscsrc/osm2bbd -f -map bbbike  
-center 12.435,55.579  
-o data-copenhagen copenhagen.osm
```

Export Close

Area to Export

55.7

12.5201

12.6025

55.6627

[Manually select a different area](#)

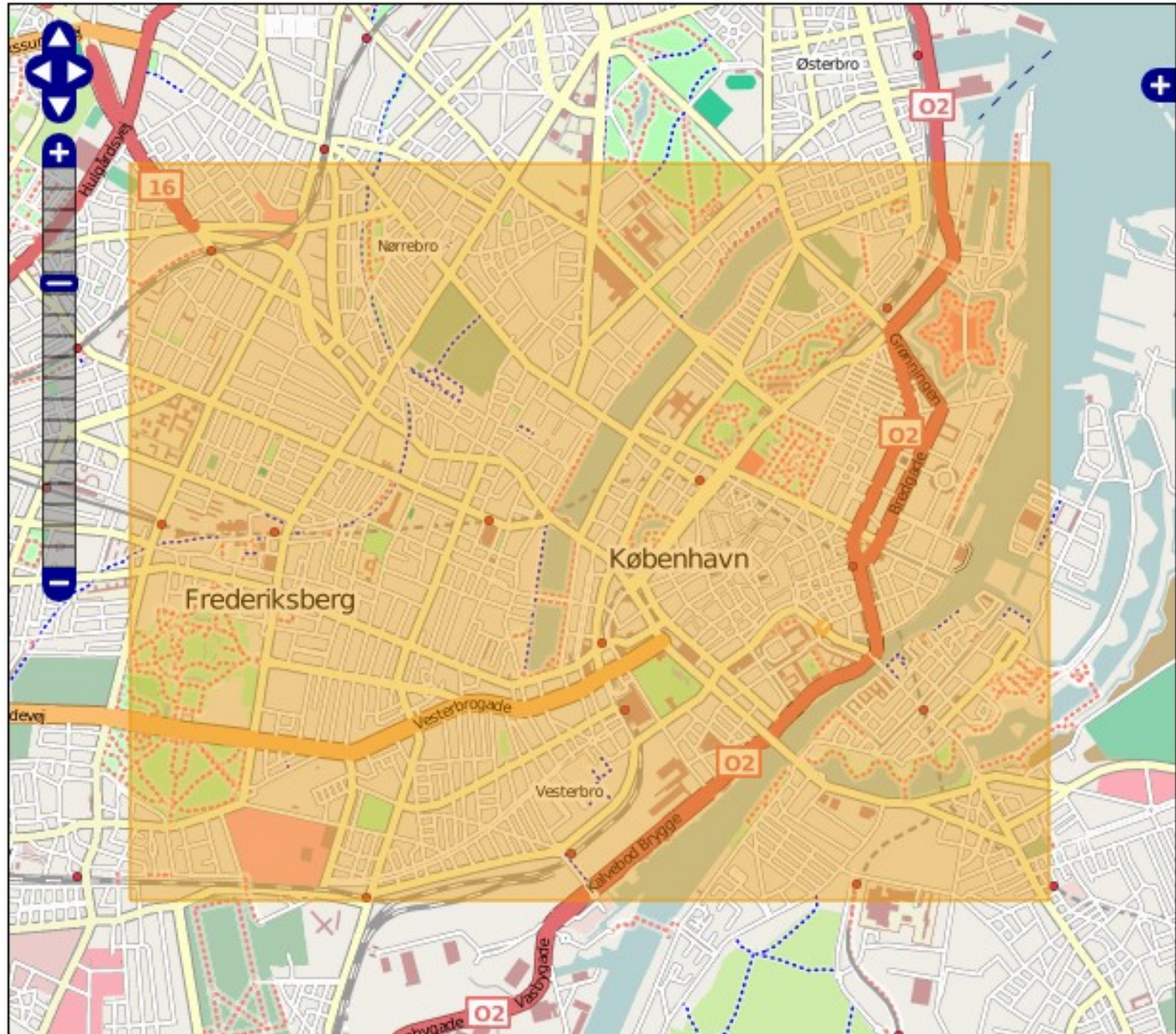
Format to Export

- OpenStreetMap XML Data
- Mapnik Image
- Osmarender Image
- Embeddable HTML

Licence

OpenStreetMap data is licensed under the [Creative Commons Attribution-ShareAlike 2.0 license](#).

Export



# Things To Do

- data from openstreetmap not bicycle optimized
- no height information (hills)
- no street quality (eg. cobblestone)
- too few traffic lights
- sea layer missing (known bug)

# What can you do?

- support the openstreetmap project for your city or area!
- edit the openstreetmap data
- add new information (for cyclists)

# Thank You

- Thanks to Slaven Rezić
- Thanks to openstreetmap project

[www.bbbike.de](http://www.bbbike.de)

Sourcecode <http://bbbike.sourceforge.net/>

[www.openstreetmap.org](http://www.openstreetmap.org)

# Live Demo ... ?

- route from CBS to “The Globe”
- route from CBS to social event